

2Fiber Port+24 RJ45 Port Ethernet Switch

DESCRIPTION:

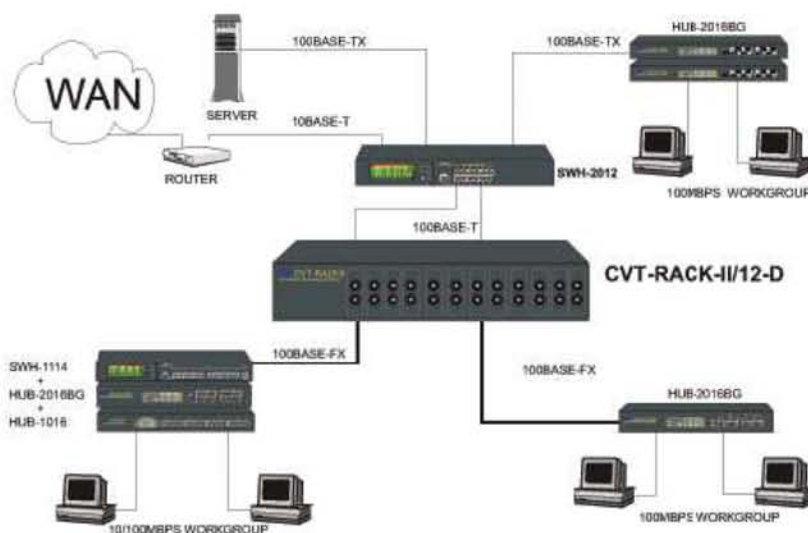
The Smart Switch provides 24 10/100M ports, one independent extension slot supporting 1/2 Port 100Base-Fx fiber module which can extend the network radii to 60km. It supports many smart configuration such as Port VLAN, Tag VLAN, Port Enable/Disable, MAC Address Binding. Featuring high-performance, easy to use and competitive price, it is an ideal solution for workgroup and smart district.

FEATURES:

- Compliant with IEEE802.3 10Base-T and IEEE802.3U 100Base-TX/FX
- Support IEEE802.3X full duplex flow control
- 24 10/100M RJ-45 Ports, optional 1/2 100Mbps fiber ports (SC/ST), 1 Console RS-232
- Auto-negotiation working speed (10/100M) and working mode (half / full duplex)
- Built-in SDRAM couples with Store-Forward ability to keep the data complete and make sure to allocate data to every port effectively.
- VLAN function: customers can structure virtual workgroup without build physical network. It can be easily configured and enhance the security of network
- Trunk function : data flow can be delivered on a clustered group ports that looked as a bulk chunnel between switch and switch, switch and server. Data transport bottleneck will be solved
- VLAN and TRUNK configuration, the function to set the state of each port, and can be effectively used at branch sites of enterprises and large networks
- Physical media:



APPLICATIONS:





Specification:			
Standard	IEEE802.3, IEEE802.3u, IEEE802.3x		
Topology	Star		
Number of Ports	24 Port 10/100Base-TX And 1/2 Port 100Base-FX		
Uplink Ports	1		
Transmission Rate	10Mbps: 14880pps, 100Mbps: 148800pps		
Switching mode	Store-and-Forward		
Flow control mode	IEEE 802.3x full-duplex flow control and back pressure flow control		
LED Indicator	LED status of Link, activity, Full/half duplex, speed, and power on		
Cable Support	10Base-T : 3, 4 or Cat 5 shielded / unshielded twisted pair, 100 meters max. ; 100Base-TX : Cat 5 shielded / unshielded twisted pair, 100 meters max. 100Base-Fx : 8.3 μm, 8.7 μm, 9 μm and 10 μm on single mode fiber and 50, 62.5 and 100 μm on multi-mode fiber		
Power supply	AC:220V or DC:-48V		
Temperature Humidity		Temperature	Humidity
	Operation	-20°C to 70°C	10% to 90%
	Storage	-40°C to 70°C	5% to 95% RH

